

NEWS!

Hardwicke Parochial Primary School

Walk as children of light

Issue 3

Friday 7th October

Focus on: HOPE

10.10.22 PSCO Internet
Safety Morning

11.10.22 & 12.10.22- 3.30-
6.00- Parent's Evening

11.10.22-14.10.22- Flu

Immunisations in school

11.10.22- Y2 Berkeley Cas-
tle Trip

13.10.22 Rob from Severn
Trent Assembly about
plastic waste

19.10.22- Y6 WW2 Experi-
ence day and Bart Gee
worship and talks with
Years 3,4 and 5

21.10.22 Last day of term
finish at 3pm

31.10.22- Secondary
school application dead-
line and 1st day back to
school

1.11.22 School Photos

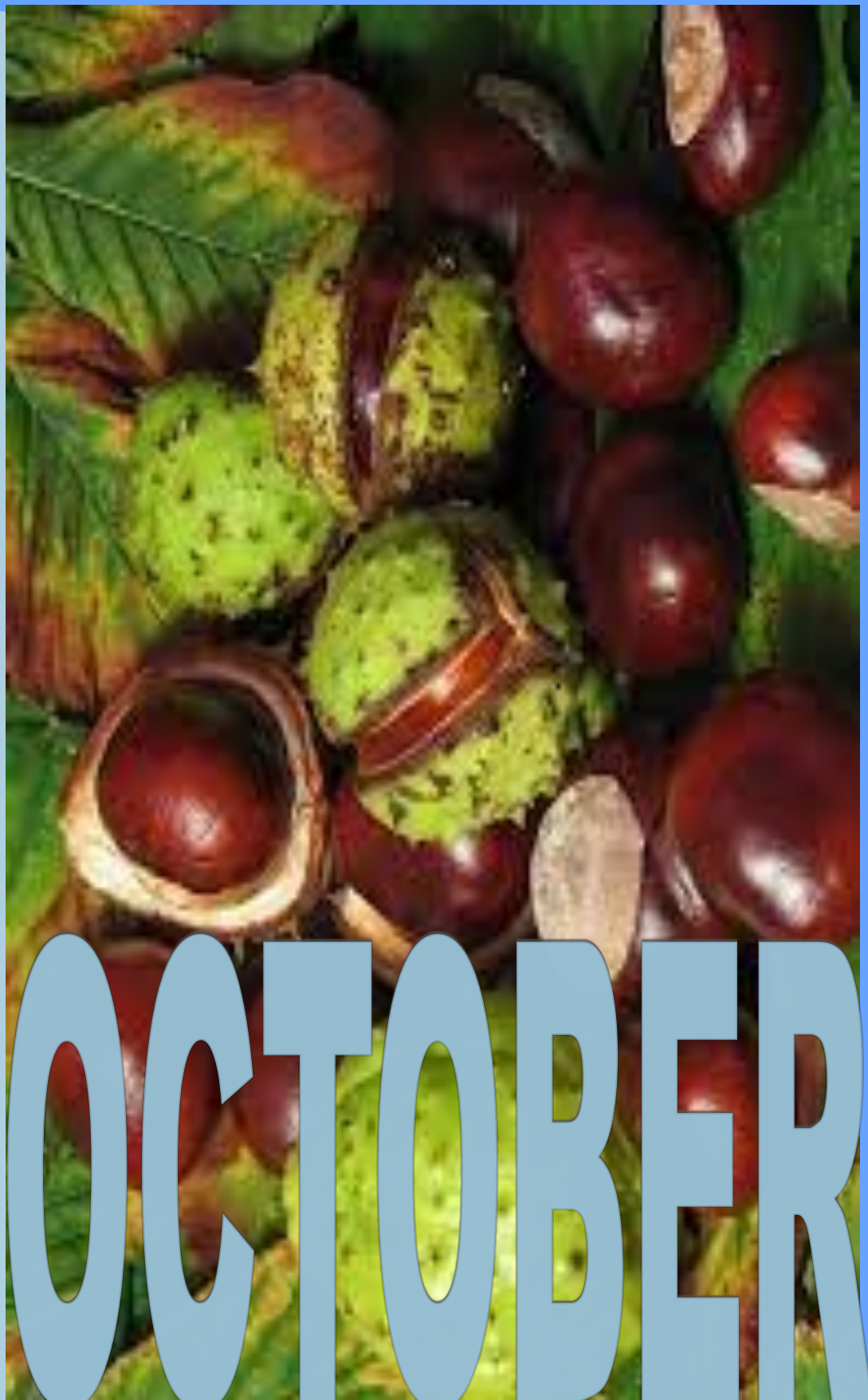
Attendance Last Week:

95.34%

Attendance this week:

94.34%

"School
is a building
which has
four walls with
tomorrow inside."
Lon Watters



Dear Parents and Carers,

Thank you for joining us for our parent meetings and harvest festivals over the last few weeks; it has been lovely to see so many of you in school and I know that the children greatly appreciated being able to share their harvest worships with their parents and the rest of the school.

We have now completed all parent events to share information for this year—the presentations are attached and may be useful for you to refer to from time to time. Thank you for joining us for these.

I have now been at Hardwicke for just over 4 weeks (and only 14 days due to working across two schools) and have spoken to many of you regarding the things that you like and those that you feel the need to change. With that in mind a link to a parent questionnaire will be sent to you on Monday, this will enable you to share your thoughts and opinions and help the school to evaluate its current practice and move forward. There is a space at the bottom to add your own personalised comments. If you could kindly fill this in before Friday 14th October—it will give myself and the team a chance to review this over half term.

Some areas which will be developed over half term include:

- Dates for the year that are already planned will be shared and then additional dates will be updated each term—these will also be added to the calendar for the year and shared as a list to pop on the fridge! We hope that this enables you to be able to forward plan more effectively.
- Opportunities to come into school to see what your children are doing and share their journey through planned events through the year (we will ensure they are on different days and either at the start or end of the day) this will be a priority this year.
- A clear strategy for communication to parents across the school via text and email, we are hoping to make things clearer and easier for parents to manage.
- Regular coffee mornings to support us in school development from a parent's point of view with different school staff available to talk to, leadership, pastoral, SEN, Family support.
- The development of parent information sessions for reading, writing and maths.
- Sharing of our curriculum plans for all year groups through showcasing them in our fortnightly newsletters.
- Updates on keeping your children safe online.
- Increasing the priority of attendance and supporting parents to get their children to school.
- Work with our local church to support school visits for worship.
- Developing practices aligned with the Trust plan and systems.

We have the most amazing team of staff at Hardwicke and committed and knowledgeable governors who will support these simple changes to make our school even better than it is already.

Lisa Harford—Executive Headteacher

How has the start of term been?

This week it's the turn of years 1, 3 and 5 to let us know how term has started?

Year 1

Year 1 have settled well this year and already seem so much more grown up! They have been working hard on their phonics and reading and have even become 2D shape experts!

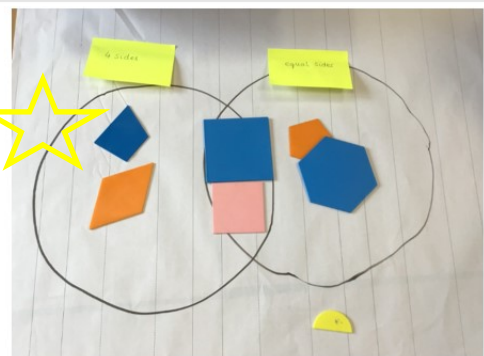
"We have been learning to identify circles, triangles, rectangles and squares and discussed the properties of each. In groups we worked together to compare and sort shapes with their similarities and differences in a Venn diagram, focusing on how many sides they have and whether they are curved or straight!"

We've challenged them to spot shapes on objects around the classroom and at home, we are looking forward to hearing what they've found!

I found lots of shapes in the classroom.

Some shapes have straight lines and some have curves.

I can name lots of shapes.



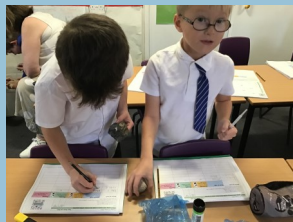
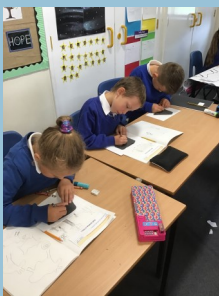


Team Year 3



Well done to all of year 3. A great start to your time as juniors! The year 3 children have worked really hard.

Year 3 have had a busy couple of weeks. In English we have been planning descriptions on a setting, (considering our favourite subject sweets and chocolate). In Science we have been experimenting with rocks, learning which are permeable, durable and have a high density. We have also had lots of fun drawing cave art on slate using pastels and crayons.

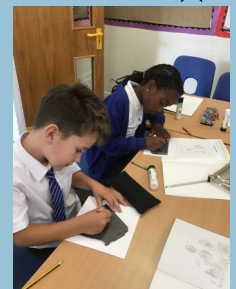


I've learnt about how rocks have different qualities.



We have worked on our descriptive vocabulary.

I've learnt about different types of rocks including if they are permeable and durable.



Harvest Time

Years 2 and 5 worked hard to prepare and practice their harvest worships at school this week. Both year groups shared the meaning of harvest and we all enjoyed watching it. It was also lovely to invite Haether (mum) Ben and Ollie in to discuss farming, thank you.

Miss Thomas and I were particularly impressed with how brave our Year 2 children were. They stood up and spoke clearly and confidently even though they were very nervous—we need to remember that these things have been lost in our schools over the last few years!



Attendance

Attendance Matters



Attendance Last Week: 95.34%

Attendance this week: 94.34%

This year we are working on improving attendance across the school. Whilst as parents, we understand the value of education and good attendance we sometimes don't realise how much lost learning there is for children over the school year. At our school we always seek out a reason for your child's absence and will help you in any way that we can to get children into school. Our family support and pastoral teams, alongside admin, teachers and SLT will always help with getting children into school.

Being late to school, which is better than not attending at all, also results in significant amount of lost learning.

If you are having trouble getting your child to school on time or they are struggling to attend daily please talk to us. We have a number of ways that we can help.

In each newsletter we will be sharing our weekly attendance and looking at ways to improve it. Our children have lost enough time in school from Covid so now it's time to give them what they deserve!

Every School Day Counts

| | | |
|---|-------------------|---|
| 0 days off school | 100% | Perfection |
| Equates to 2 days off school each year | 99% | Excellent |
| Equates to 5 days off school each year | 97% | Good |
| Equates to 10 days off school each year | 95% | Slight Concern |
| Equates to 20 days off school each year | 90% | Concerned |
| Equates to 30 days off school each year | 85% | Very Concerned |
| 5 days absence over the whole year | 97% - 100% | Good chance of success and progress |
| 20 days absence over the whole year | 90% | Less chance of success. Harder to make progress |
| 20+ days absence over the whole year | Under 90% | Detrimental to success and progress |

Every Minute Counts

LATENESS = LOST LEARNING
(Figures below are calculated over a school year)

| | |
|--------------------------|-----------------------|
| 5 Minutes late each day | 3 days lost! |
| 10 Minutes late each day | 6.5 days lost! |
| 15 Minutes late each day | 10 days lost! |
| 20 Minutes late each day | 13 days lost! |
| 30 Minutes late each day | 19 days lost! |

Be at the classroom on time and ready to learn!

Useful Updates

Earrings

We have been made aware that the old policy did allow for 'small studs' this was an error on our part. We would however, prefer that children refrained from wearing earrings at school.

New Curriculum

Our new curriculum documents are on the school website and staff are working on developing this across the school—we will keep you posted on our updates through our newsletters.

Data Request Forms

Please make sure you have completed and returned our data request forms. These form a vital part of school communication with you. Here is the link:

Communicating with us

admin@hardwicke.gloucs.sch.uk—any communication relating to your child (absence, illness, collection, requests for information or to reach the class teacher)

sendco@hardwicke.gloucs.sch.uk for any communication regarding special educational needs

SLT@hardwicke.gloucs.sch.uk will NOT be used after half term - instead we ask you to email all correspondence through admin@ and add FAO for the staff member you wish to communicate with—this will ensure that the message gets to the right person. Telephone us and leave a message 01452 720538 we listen to all messages every morning on the answer phone

Harvest with Reverend Richard—Sunday 9th October

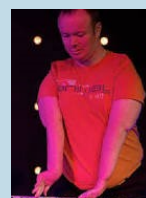
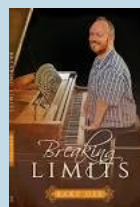
There will be a service at school again this Sunday to celebrate Harvest. Please join us at 11am and bring a selection of non-perishable food for Gloucester Foodbank.



Winter Support—A message from Reverend Richard

We know this winter will be hard for many. Sadly the Church can't offer to pay your energy bills. But to try to help, we are setting up a store of duvets and sleeping bags for people to snuggle up in when they can't afford to turn their heating on. If anyone has any clean spare ones, let me know and I will collect. If you know someone who'd like one, be in touch and I will deliver. Thank you! Rev Richard 01452 720015, vicar@hardwicke-elmore-longney.church

On Thursday 13th Oct (next week!), Rob from Severn Trent will be delivering an information assembly about hydration and plastic pollution. This will be followed by workshops with Year 3.



The following Monday, 19th October, we will be joined by Bartholomew Gee. You can follow his journey about living with Arthrogryposis on: <https://www.breakinglimits.co.uk/> He shows that we can all flourish despite living with a disability.

Parking Issues @Hardwicke

Unsafe Parking – October 2022

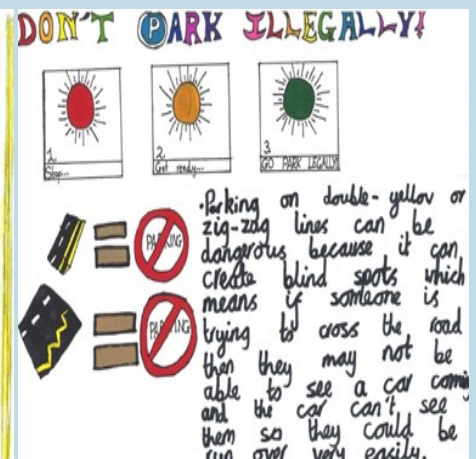
We continue to have concerns about the safety of pupils and local residents outside of our school and in nearby roads. Please refrain from parking in front of the school gates: this is a serious issue if we need to bring an ambulance or the fire services onto site. Please also consider our neighbours—make sure you do not park over residents driveways. Whilst as a school we have no jurisdiction in regard to parking, we do hope that you agree that our children's safety is paramount.

PLEASE REFRAIN FROM:

- Parking on double yellow lines
- Zig Zags
- In front of the school gates on the yellow zig zags
- On roundabouts or corners
- In driver turnaround spots
- Blocking driveways



Parking Enforcement urge you to email in directly to Highways: Vehicles causing and obstruction, preventing emergency access, parking on the pavement or blocking driveways are parking illegally. Report these instances to



101@gloucestershire.pnn.police.uk. Parking on zigzag lines, double yellow lines etc. please make a parking enforcement request to: <https://parking-enforcement-requests/>.

www.gloucestershire.gov.uk/e-forms/



THANK YOU