

## Maths

New Learning:

- Statistics (Tally charts, pictograms, block graphs)
- Measuring capacity (reading scales)
- Measuring temperature (reading scales)

SATs revision:

- Addition and subtraction of 2 digit numbers.
- Multiplication and division
- Finding fractions of a number



## Religious Education

Our RE unit for this term is themed around the Gospels. We will be answering the question "What is the good news Jesus brings?" We will learn how Jesus brings - forgiveness, friendship and peace and how Christians try to reflect this in their daily lives.



## PSHE

This term's topic is 'Being my Best'. We will learn how to be our own cheerleaders and support others. We will also learn how to take care of our mental and physical wellbeing by eating healthily, brushing our teeth and the importance of washing regularly.

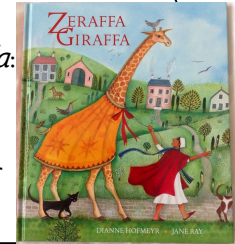


## Music

We will be using the school's new music scheme 'Kapow' to study African Call and Response songs. We will use a traditional African song called Che Che Kule to help us learn all about timbre, rhythm, dynamics and music notation. Then we will even compose our own version!

## English

This term we will be exploring the true story of *Zeraffa Giraffa*: an African Giraffe given as a gift to France in the 1800s. We will be following Zeraffa's journey through Africa and France alongside his handler Atil. We will be writing character descriptions of Atil and retelling the story in our own words.



# Amazing Africa



## Geography – 'From Gloucester to Ghana'

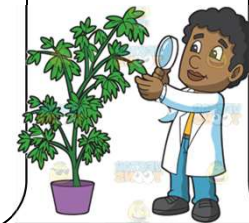
We will be learning about where in the world Africa is and looking at similarities and differences between Ghana and Gloucester, whilst developing our map skills and locational awareness of the continents and oceans of our world. We will also compare life in a village like Hardwicke compared to a big capital city like Accra.



## Our Christian value this term is 'Generosity'.

## Science

Our topic this term is 'Plants'. We will be conducting an experiment to see what makes a plant grow healthily. We will look at what is inside a seed and a bulb and answering the question 'How do plants grow in hot, dry areas?'



## P.E.

This will be with Montagu on a Wednesday this term.



## Guided Reading

2G will continue with 'The Secret Garden'.  
2S will start 'The Railway Children.'



## Spellings

Every day we practice Year 2 spelling patterns and the Year 2 Hard to Read and Spell words as well as working on our handwriting every Friday.